



# Community Engagement Summary

Incorporating Play – Margaret River Youth Precinct  
September / October 2016



## Background

Development of the Margaret River Youth Precinct was identified in the Corporate Business Plan 2015-2019, strategy 2.2.1 - provide programs and facilities that encourage resilience in seniors, young people and families. Action 2.2.1.1 - Adopt concept plans and funding strategy and seek funding for upgrades to the Margaret River Youth Precinct was completed in the 2015-2016 financial year.

The Shire have so far involved local community members in the concept design process of the precinct's skate park, and a working group is currently being formed to guide this project over the next year. As part of finalising the concept design feedback was sort from the wider community in regards to '*incorporating play*'. The results of this feedback will be used to determine the types of play elements included in the upgrade to this facility.

Community engagement for incorporating play at the MRYP opened on the 05 September and ran for six weeks, closing on Friday the 14<sup>th</sup> of October. The purpose of the engagement was to gain an understanding of the style of play equipment that the community would like to see included in the upgrade to the MRYP.



# What community engagement occurred?

During this six week period:

- An online survey was advertised for [www.yoursay.amrshire.wa.gov.au](http://www.yoursay.amrshire.wa.gov.au) in the local paper and on the shire website. A hard copy survey was also available at the Margaret River Shire Administration office and at the Margaret River Library.
- Face to face consultation was carried out at the Dads Day Festival in Cowaramup on the 4th of September.

Home » Margaret River Youth Precinct

## Margaret River Youth Precinct



Thank you to everyone who participated in the recent survey. Keep an eye on this page for updates on this work.

CAST YOUR VOTE

FUNDING DETAILS

CLOSED: This survey has concluded.

**Cast Your Vote**

Please take a minute to vote for your preferred style of play equipment.



Take Survey



## What did the community say?

The community engagement successfully engaged with a wide range of community members, with 38 online surveys received and 34 participants providing face to face feedback at the Dads Day Festival in Cowaramup.

The consultation results indicated that the majority of participants see nature play as the preferred style of play ground equipment.

The other popular play styles included:

- Parkour (21%)
- Old School (18%)
- Rope (17%)





# General feedback

As part of this consultation community members were asked to share any other considerations they thought would enhance the upgrade to the MRYP. The following ideas were received;

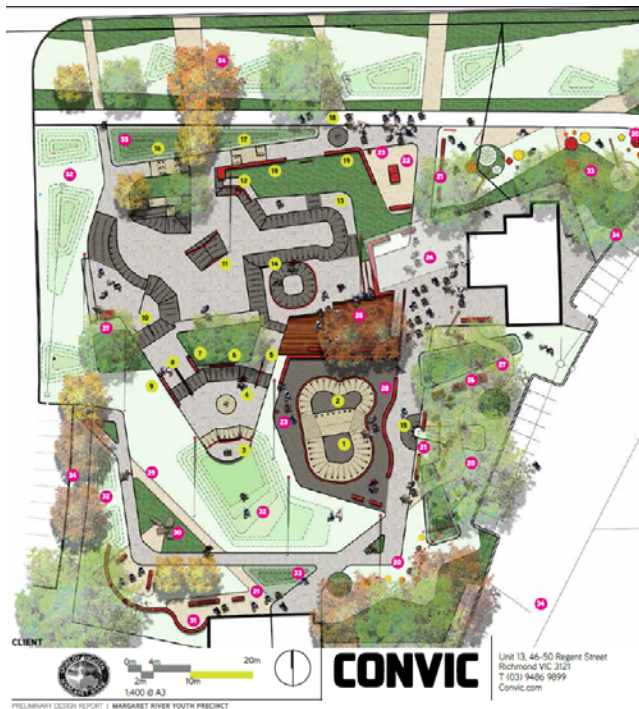
- Sufficient shade, shade sails / large trees etc.
- Baby changing facilities
- A toddler toilet inside the disabled / mother & baby toilets
- Automatic water dispenser for dogs
- Scented planting such as jasmine and rosemary
- Area of the skate park suitable for the smaller children
- Picnic benches with roofs (similar to the ones at rotary park)
- Water drinking fountains
- Trim trail – for exercise
- Overhead lighting on button timer which ceases at 22:00 / 23:00 (similar to the skate park in Dunsborough)
- Noticeboard with clear Perspex front that can be utilised by community groups / shire / rangers to advertise events & clubs etc.
- Perspex leaflet holders for rangers to utilise for dog info leaflets
- Suitable dog signage
- BBQ area – this would be useful for ongoing youth projects requiring sausage sizzles etc.
- Upgrade to include sufficient POS – lawn area
- Shade
- Focus for girls
- Caution around planting new trees around the skate park (safety concern).
- Musical play
- Accessible play equipment





## The next steps

Harnessing the results of this feedback from the community, the Shire will work closely with the MRYP working group to finalise the concept design for the precinct.



The upgrade is expected to be completed by October 2017 and will include;

- *Upgrade to the skate facilities*
- *Installation of shade, seating and BBQs*
- *Installation of nature play and parkour elements within the precinct*
- *Landscaping and lighting.*

*For more information regarding this project,  
please contact:*

### Who's listening

Susan Elton

**Role:** Community  
Development  
Officer

**Organisation:** Shire of Augusta  
Margaret River

**Phone:** 9780 5233

**Email:** [selton@amrshire.wa.  
gov.au](mailto:selton@amrshire.wa.gov.au)

